



TDP COMO
TENDAGGIPARADISO

TDP Como

We distribute our products around Italy and abroad, as far as Europe, former Soviet Union countries, South America and the Far East.



ABOUT US

Tendaggi Paradiso was founded in Casnate con Bernate in 1979 by Ernesto Castiglioni and his family to produce innovative, high-quality fabrics for curtains and home or contract furnishings. The company specialises in producing curtains and decorative fabrics up to 340 cm high: organza, jacquard, fil coupé, and laser cut.

Its production capacity is 80,000 metres a month.

It distributes its products around Italy and abroad, as far as Europe, former Soviet Union countries, South America and the Far East.

The company now has: a warehouse, quality control department and offices to handle production development in Cassina Rizzardi, as well as a weaving mill in Guanzate.

MISSION

To make high-quality products day in, day out, while staying true to our roots but open to the future; we will take this huge project forward with the same passion and enthusiasm as always, a project created from years of experience and developed thanks to our hard work every day.

EXPORTS

40% of our production is intended for the Italian market, while 60% is sent abroad: from Europe to former Soviet Union countries, from South America to the Far East.

Anywhere where they want a stylish, high-quality product, we are ready to offer customers the passion and commitment that has always supported our work.



TENDAGGI PARADISO



Tendaggi Paradiso offers a huge range of curtains and decorative fabrics. Our strict checks at every stage of production allow us to guarantee a top-quality product.

Our Research and Development office constantly offers trendy new collections, both in terms of their materials and colours. All this is supported by coordinated catalogues in settings, with goods ready in stock.



BISSO 50% LINEN

Collection	Taglio
Colour	Natural 401
Colour variations	10
Product category	Curtains
Base composition	Linen 50% - Pol. 50%
Effective width (cm)	330
Weight (g/lm)	440
Horizontal repeat	//
Vertical repeat	//
Finishing	Piece-dyed
Lightfastness	1 2 3 4 5 6 7 8
Warp dimensional stability	+/- 1%
No. of warp threads/cm	13
No. of weft threads/cm	13
Warp yarn type	Spun yarn
Weft yarn type	Spun yarn
Weft dimensional stability	+/- 1%



Made from 50% natural fibres, this curtain has a natural, uneven look created by the linen, making it thick and soft to the touch.



FRASSINO

Collection	Taglio
Colour	Natural
Colour variations	27
Product category	Curtains
Base composition	Pol. 100%
Effective width (cm)	330 lead band
Weight (g/lm)	174
Horizontal repeat	//
Vertical repeat	//
Finishing	Piece-dyed
Lightfastness	1 2 3 4 5 6 7 8
Warp dimensional stability	+/- 1%
No. of warp threads/cm	41
No. of weft threads/cm	36
Warp yarn type	Continuous
Weft yarn type	Continuous
Weft dimensional stability	+/- 1%



A classic semi-transparent polyester curtain with a delicate drape and a soft texture.



FINADRA 2003

Collection	Taglio
Colour	Natural PBO
Colour variations	6
Product category	Curtains
Base composition	Pol. 84% - Linen 16%
Effective width (cm)	310 lead band
Weight (g/lm)	266
Horizontal repeat	//
Vertical repeat	//
Finishing	Yarn-dyed
Lightfastness	1 2 3 4 5 6 7 8
Warp dimensional stability	+/- 2%
No. of warp threads/cm	21
No. of weft threads/cm	21
Warp yarn type	Discontinuous
Weft yarn type	Continuous
Weft dimensional stability	+/- 2%



A curtain featuring a warp linen yarn that gives it a horizontal effect, while also being very soft thanks to the vigorous finishing.



OSAKA 2540

Collection	Taglio
Colour	Pearl
Colour variations	4
Product category	Curtains
Base composition	Pol. 100%
Effective width (cm)	320 lead band
Weight (g/lm)	188
Horizontal repeat	//
Vertical repeat	//
Finishing	Yarn-dyed
Lightfastness	1 2 3 4 5 6 7 8
Warp dimensional stability	+/- 2%
No. of warp threads/cm	40
No. of weft threads/cm	39
Warp yarn type	Continuous
Weft yarn type	Spun
Weft dimensional stability	+/- 1%



A transparent curtain with a wavy effect thanks to the use of novelty yarns. Soft to the touch.



OSAKA 2702 devoré st.488

Collection	Taglio
Colour	Pearl
Colour variations	
Product category	
Base composition	Pol. 30% - Visc. 70%
Effective width (cm)	320
Weight (g/lm)	
Horizontal repeat	
Vertical repeat	
Finishing	
Lightfastness	
Warp dimensional stability	
No. of warp threads/cm	
No. of weft threads/cm	
Warp yarn type	
Weft yarn type	
Weft dimensional stability	

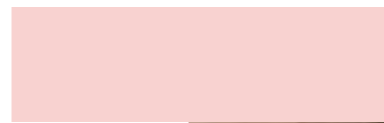


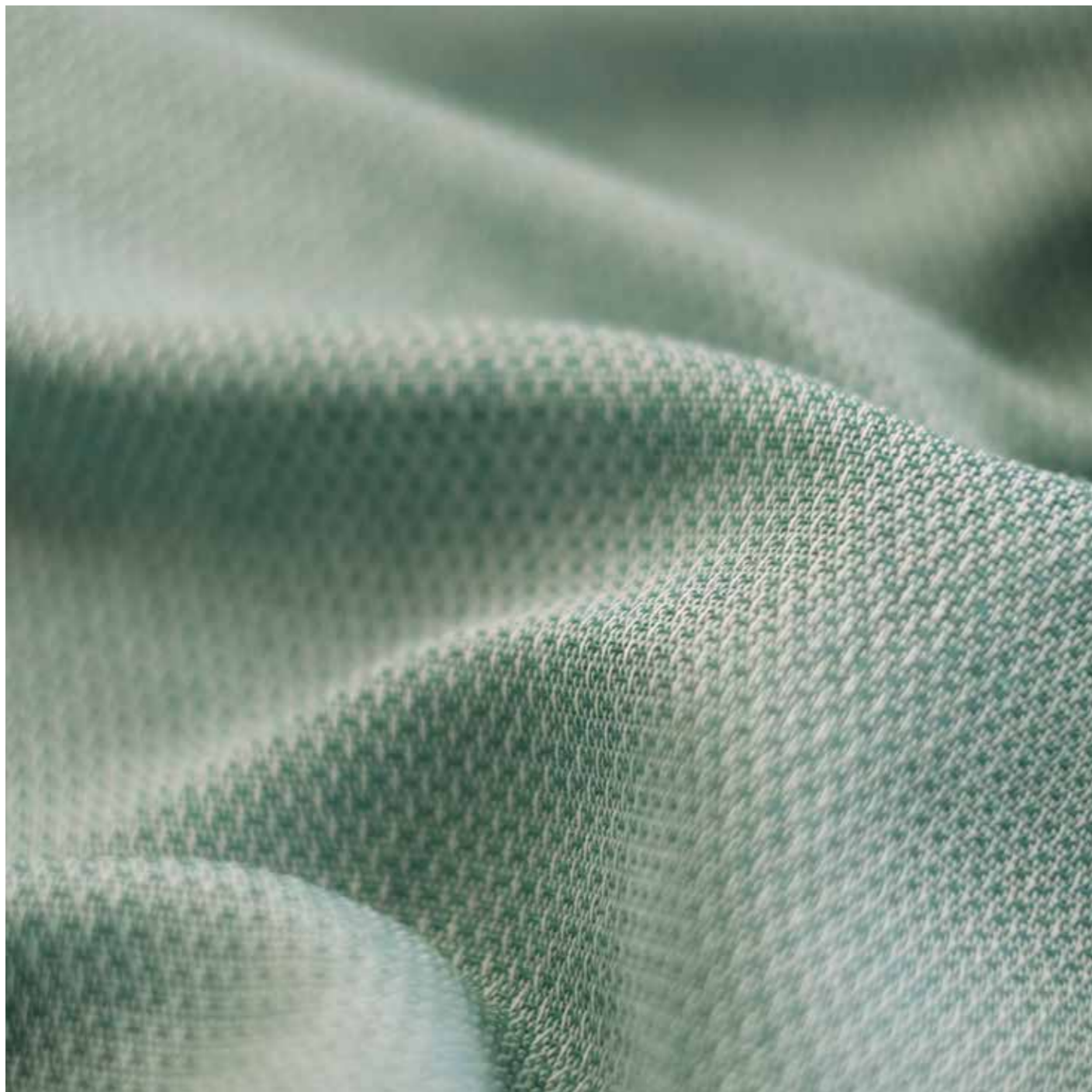
Available in 27 different colours and a length of 35 m.



NO FIRE

Certified fireproof products created and developed with fireproof yarns.
An extensive catalogue with customisable options.





CERINO 9159

Collection	NO FIRE
Colour	Lagoon
Colour variations	26
Product category	//
Base composition	FR Pol. 100%
Width (cm)	320
Weight (g/lm)	520
Repeat	//
Pilling	1 2 3 4 5 6 7 8
Lightfastness	1 2 3 4 5 6 7 8
Warp dimensional stability	//
No. of warp threads/cm	17
No. of weft threads/cm	15
Warp yarn type	Spun
Weft yarn type	Continuous
Martindale	//
30°C wash size variation	+/- 1%

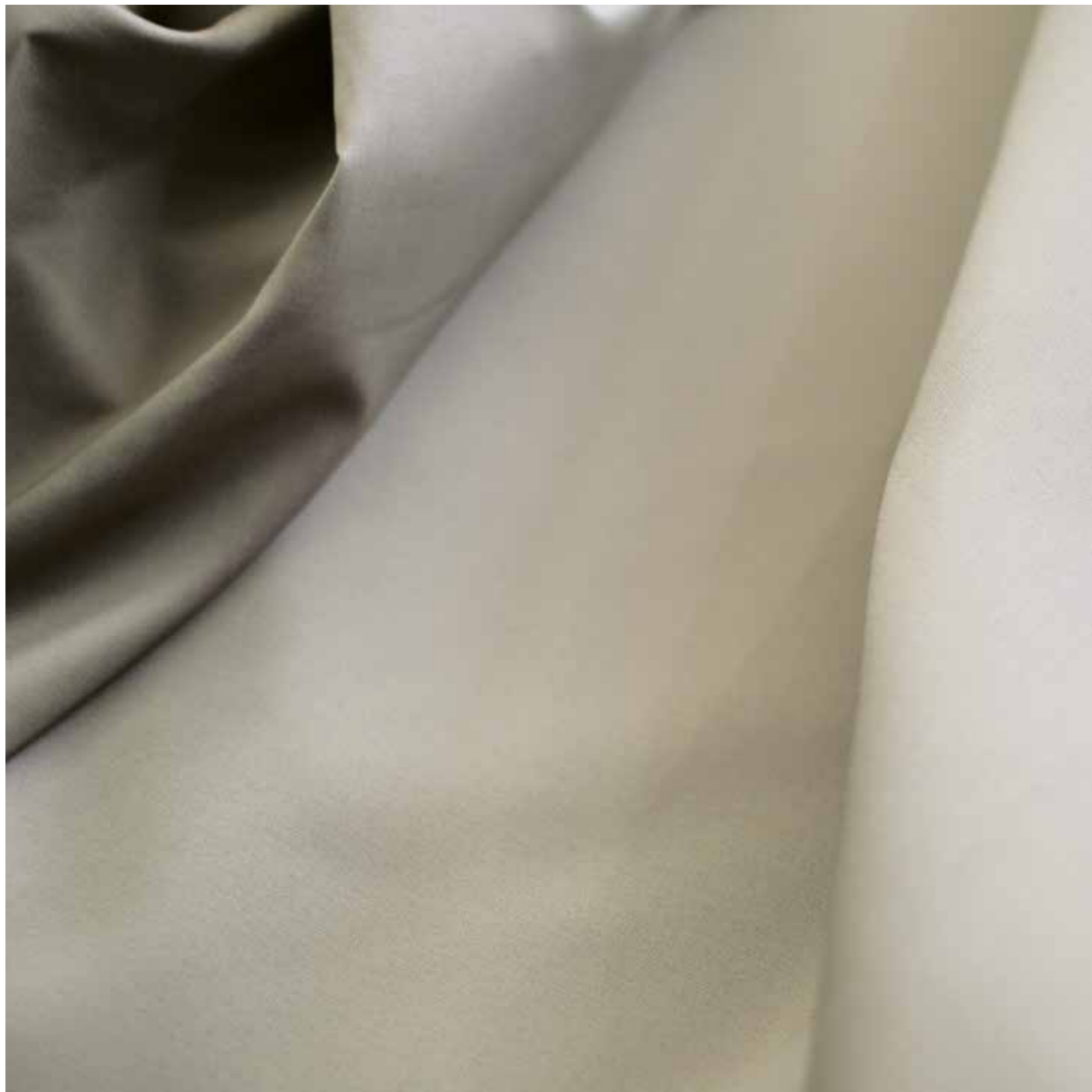
CERTIFICATIONS:

ITALY CLASS 1	UNI 9174 (1987)
FRANCE M1	NF P 92-503
GERMANY B1	DIN 4102
EUROPEAN CLASS 1	UNI EN 13773:2003
IMO Dir. 2014/90/EU	0497/19



no fire

Double-width
fireproof cloth, soft
to the touch.



TAFFETAS 9102

Collection	NO FIRE
Colour	Putty 299
Colour variations	51 col. stock service
Product category	
Base composition	FR Pol. 100%
Effective width (cm)	approx. 300
Weight (g/lm)	approx. 396
Horizontal repeat	//
Vertical repeat	//
Finishing	//
Lightfastness	1 2 3 4 5 6 7 8
Warp dimensional stability	//
No. of warp threads/cm	64
No. of weft threads/cm	32
Warp yarn type	Continuous
Weft yarn type	Continuous
Martindale	//
30°C wash size variation	+/- 1%

CERTIFICATIONS:

ITALY CLASS 1	UNI 9174 (1987)
FRANCE M1	NF P 92-503 (1995)
GERMANY B1	DIN 4102
EUROPEAN CLASS 1	UNI EN 13773:2003
IMO Dir. 2014/90/EU	0497/19



no fire

A double-width opaque taffeta fabric with a sophisticated charm.



BLACK OUT 9154 VELVET

Collection	NO FIRE
Colour	Ochre
Colour variations	16
Product category	//
Base composition	FR Pol. 100%
Width (cm)	280
Weight (g/lm)	1157/1204
Repeat	//
Pilling	1 2 3 4 5 6 7 8
Lightfastness	1 2 3 4 5 6 7 8
Warp dimensional stability	+/- 1%
No. of threads/cm	//
Yarn type	//
Martindale	> 150,000 rubs
30°C wash size variation	+/- 1%

CERTIFICATIONS:

ITALY CLASS 1	UNI 9174 (1987)
GERMANY B1	DIN 4102
EUROPEAN CLASS 1	UNI EN 13773:2003
IMO Dir. 2014/90/EU	0497/19



no fire

A classic soft 100% French polyester blackout velvet with a width of 280 cm.



WOOL 9172

Collection	NO FIRE
Colour	Denim
Colour variations	33
Product category	//
Base composition	FR Pol. 100%
Width (cm)	300
Weight (g/lm)	940
Repeat	//
Pilling	1 2 3 4 5 6 7 8
Lightfastness	1 2 3 4 5 6 7 8
Warp dimensional stability	+/- 1%
No. of warp threads/cm	17
No. of weft threads/cm	15
Warp yarn type	Continuous
Weft yarn type	Continuous
Martindale	> 70,000 rubs
30°C wash size variation	+/- 1%

CERTIFICATIONS:

ITALY CLASS 1	UNI 9174 (1987)
FRANCE M1	NF P 92-503 (1995)
GERMANY B1	DIN 4102
IMO Dir. 2014/90/EU	0497/19



no fire

A versatile fabric suitable for upholstery featuring a wool-like finish.



WOOL 9172

Collection	NO FIRE
Colour	Mocha
Colour variations	33
Product category	//
Base composition	FR Pol. 100%
Width (cm)	300
Weight (g/lm)	940
Repeat	//
Pilling	1 2 3 4 5 6 7 8
Lightfastness	1 2 3 4 5 6 7 8
Warp dimensional stability	+/- 1%
No. of warp threads/cm	17
No. of weft threads/cm	15
Warp yarn type	Continuous
Weft yarn type	Continuous
Martindale	> 70,000 rubs
30°C wash size variation	+/- 1%

CERTIFICATIONS:

ITALY CLASS 1	UNI 9174 (1987)
FRANCE M1	NF P 92-503 (1995)
GERMANY B1	DIN 4102
IMO Dir. 2014/90/EU	0497/19



no fire

A versatile fabric suitable for upholstery featuring a wool-like finish.



SEQUOIA 9164

Collection	NO FIRE
Colour	Silver
Colour variations	6
Product category	//
Base composition	FR Pol. 100%
Width (cm)	300
Weight (g/lm)	895
Repeat	//
Pilling	1 2 3 4 5 6 7 8
Lightfastness	1 2 3 4 5 6 7 8
Warp dimensional stability	+/- 1%
No. of warp threads/cm	3.5
No. of weft threads/cm	4
Warp yarn type	Continuous
Weft yarn type	Continuous
Martindale	//
30°C wash size variation	+/- 2%

CERTIFICATIONS:

ITALY CLASS 1	UNI 9174 (1987)
GERMANY B1	DIN 4102
IMO Dir. 2014/90/EU	0497/19



no fire

A technical wide-knit leno weave fabric.



SEQUOIA 9164

Collection	NO FIRE
Colour	Straw yellow
Colour variations	6
Product category	//
Base composition	FR Pol. 100%
Width (cm)	300
Weight (g/lm)	895
Repeat	//
Pilling	1 2 3 4 5 6 7 8
Lightfastness	1 2 3 4 5 6 7 8
Warp dimensional stability	+/- 1%
No. of warp threads/cm	3.5
No. of weft threads/cm	4
Warp yarn type	Continuous
Weft yarn type	Continuous
Martindale	//
30°C wash size variation	+/- 2%

CERTIFICATIONS:

ITALY CLASS 1	UNI 9174 (1987)
GERMANY B1	DIN 4102
IMO Dir. 2014/90/EU	0497/19



no fire

A technical wide-knit leno weave fabric.



SUPER BUIO ACID

Collection	NO FIRE
Colour	Acid
Colour variations	34
Product category	//
Base composition	FR Pol. 100%
Width (cm)	300
Weight (g/lm)	697
Repeat	//
Pilling	1 2 3 4 5 6 7 8
Lightfastness	1 2 3 4 5 6 7 8
Warp dimensional stability	+/- 1%
No. of warp threads/cm	80
No. of weft threads/cm	25
Warp yarn type	Continuous
Weft yarn type	Spun
Martindale	42,000 rubs
30°C wash size variation	+/- 2%

CERTIFICATIONS:

ITALY CLASS 1	UNI 9174 (1987)
FRANCE M1	NF P 92-503
GERMANY B1	DIN 4102
EUROPEAN CLASS 1	UNI EN 13773:2003
IMO Dir. 2014/90/EU	0497/19



no fire

A double-width soft fabric made from French polyester satin with a classic, sophisticated look.



SUPER BUIO FERN

Collection	NO FIRE
Colour	Fern
Colour variations	34
Product category	//
Base composition	FR Pol. 100%
Width (cm)	300
Weight (g/lm)	697
Repeat	//
Pilling	1 2 3 4 5 6 7 8
Lightfastness	1 2 3 4 5 6 7 8
Warp dimensional stability	+/- 1%
No. of warp threads/cm	80
No. of weft threads/cm	25
Warp yarn type	Continuous
Weft yarn type	Spun
Martindale	42,000 rubs
30°C wash size variation	+/- 2%

CERTIFICATIONS:

ITALY CLASS 1	UNI 9174 (1987)
FRANCE M1	NF P 92-503
GERMANY B1	DIN 4102
EUROPEAN CLASS 1	UNI EN 13773:2003
IMO Dir. 2014/90/EU	0497/19



nofire

A double-width soft fabric made from French polyester satin with a classic, sophisticated look.



EDOLO 9007

Collection	NO FIRE
Colour	Husky
Colour variations	12
Product category	//
Base composition	FR Pol. 100%
Width (cm)	330
Weight (g/lm)	540
Repeat	//
Pilling	1 2 3 4 5 6 7 8
Lightfastness	1 2 3 4 5 6 7 8
Warp dimensional stability	//
No. of warp threads/cm	22
No. of weft threads/cm	11
Warp yarn type	Continuous
Weft yarn type	Continuous
Martindale	//
30°C wash size variation	+/- 1%

CERTIFICATIONS:

ITALY CLASS 1	UNI 9174 (1987)
FRANCE M1	NF P 92-503
GERMANY B1	DIN 4102
EUROPEAN CLASS 1	UNI EN 13773:2003
IMO Dir. 2014/90/EU	0497/19



no fire

A technical double-width curtain fabric.



EDOLO 9007

Collection	NO FIRE 9007
Colour	Natural
Colour variations	12
Product category	//
Base composition	FR Pol. 100%
Width (cm)	330
Weight (g/lm)	540
Repeat	//
Pilling	1 2 3 4 5 6 7 8
Lightfastness	1 2 3 4 5 6 7 8
Warp dimensional stability	//
No. of warp threads/cm	22
No. of weft threads/cm	11
Warp yarn type	Continuous
Weft yarn type	Continuous
Martindale	//
30°C wash size variation	+/- 1%

CERTIFICATIONS:

ITALY CLASS 1	UNI 9174 (1987)
FRANCE M1	NF P 92-503
GERMANY B1	DIN 4102
EUROPEAN CLASS 1	UNI EN 13773:2003
IMO Dir. 2014/90/EU	0497/19



no fire

A technical double-width curtain fabric.



Como TESSUTI

The creative process and production of our products are 100% made in Italy. The fabrics and textile materials are designed by adding original weaves, fibres, colours and visual effects.





CT 325 VELVET

Collection	Como Tessuti
Colour	Indigo
Colour variations	35
Product category	//
Base composition	Pol. 100%
Width (cm)	300
Weight (g/lm)	960
Repeat	//
Pilling	1 2 3 4 5
Lightfastness	1 2 3 4 5 6 7 8
Warp dimensional stability	//
No. of warp threads/cm	//
No. of weft threads/cm	//
Warp yarn type	//
Weft yarn type	//
Martindale	45,000 rubs
30°C wash size variation	
Warp	+/- 1.9%
Weft	+/- 0.4%



Soft, thick and hard-wearing. A versatile fabric that works well for drapes. Soft and compact upholstery.



CT 133

Collection	Como Tessuti
Colour	Sky blue
Colour variations	5
Product category	Curtains
Base composition	Linen 100%
Effective width (cm)	320
Weight (g/lm)	587
Horizontal repeat	//
Vertical repeat	//
Finishing	Yarn-dyed
Lightfastness	1 2 3 4 5 6 7 8
Warp dimensional stability	+/- 2%
No. of warp threads/cm	14
No. of weft threads/cm	27
Warp yarn type	Discontinuous
Weft yarn type	Discontinuous
Weft dimensional stability	+/- 2%



A great fabric for curtains.
This item is soft and hangs beautifully thanks to its finishing.



CT 144

Collection	Como Tessuti
Colour	Green
Colour variations	4
Product category	Curtains
Base composition	Wool 36% - Linen 28% - Acril. 36%
Effective width (cm)	320
Weight (g/lm)	455
Horizontal repeat	//
Vertical repeat	//
Finishing	Yarn-dyed
Lightfastness	1 2 3 4 5 6 7 8
Warp dimensional stability	+/- 2%
No. of warp threads/cm	14
No. of weft threads/cm	8
Warp yarn type	Spun
Weft yarn type	Spun
Weft dimensional stability	+/- 2%



A lined semi-covering curtain with a modern look, thick and soft thanks to the use of wool yarns.



CT 158

Collection	Como Tessuti
Colour	Blue grey J683
Colour variations	2
Product category	Curtains
Base composition	FR Pol. 100%
Width (cm)	300
Weight (g/lm)	155
Horizontal repeat	60
Vertical repeat	60
Finishing	Digital printed
Lightfastness	1 2 3 4 5 6 7 8
Warp dimensional stability	+/- 1%
No. of warp threads/cm	30
No. of weft threads/cm	30
Warp yarn type	Flat yarn
Weft yarn type	Flat yarn
Weft dimensional stability	+/- 1%

CERTIFICATIONS:

ITALY CLASS 1	UNI 9174 (1987)
FRANCE M1	NF P 92-503
GERMANY B1	DIN 4102
EUROPEAN CLASS 1	UNI EN 13773:2003
IMO Dir. 2014/90/EU	0497/19



An extensive collection of curtains, decorative fabrics and blackout materials up to 340 cm in width, available by the bolt or cut.



CT 162

Collection	Como Tessuti
Colour	Mustard
Colour variations	8
Product category	Curtains
Base composition	FR Pol. 100%
Effective width (cm)	300
Weight (g/lm)	454
Horizontal repeat	//
Vertical repeat	//
Finishing	Piece-dyed
Lightfastness	1 2 3 4 5 6 7 8
Warp dimensional stability	+/- 1%
No. of warp threads/cm	14
No. of weft threads/cm	14
Warp yarn type	Discontinuous
Weft yarn type	Discontinuous
Weft dimensional stability	+/- 1%

CERTIFICATIONS:

ITALY CLASS 1	UNI 9174 (1987)
FRANCE M1	NF P 92-503 (1995)
GERMANY B1	DIN 4102
IMO Dir. 2014/90/EU	0497/19



A soft, light fabric featuring a slub look similar to linen.



CT 166

Collection	Como Tessuti
Colour	Air force blue
Colour variations	7
Product category	Curtains
Base composition	Acrylic 100%
Effective width (cm)	330
Weight (g/lm)	1013
Horizontal repeat	//
Vertical repeat	//
Finishing	Yarn-dyed
Lightfastness	1 2 3 4 5 6 7 8
Warp dimensional stability	+/- 2%
No. of warp threads/cm	28
No. of weft threads/cm	19
Warp yarn type	Continuous
Weft yarn type	Discontinuous
Weft dimensional stability	+/- 2%



An extensive collection of curtains, decorative fabrics and blackout materials up to 340 cm in width, available by the bolt or cut.

RESEARCH AND DEVELOPMENT

The Research and Development department is the cornerstone of our company. Every day, over 15% of our workforce researches and tests out new products, processes and finishes.

Every day, we monitor the entire production chain of our items, from the start of the yarn processing to the finished product. We can combine embroidery with laser processing up to 300 cm in width, achieving a continuous process and excellent-quality finished products.



Supported by our in-house workshop for research into colours, variations, designs and for making prototype fabrics, the company now offers a complete collection of classic and modern fabrics as well as trendy solutions.

COLOURS



CERTIFICATIONS

Our goal is to create safe, high-quality products for our customers.



A safer life is a better life.

Our entire company, from our designers to our suppliers right through to our co-workers in stores, strives to create safer products for our customers.

It is part of who we are.

Our materials are carefully checked and tested. They comply with applicable laws and standards in the market where they will be sold, as well as meeting our requirements, which are often far tougher than those set by the authorities.

Our designers, product developers and engineers consider how the product might be used, including incorrectly, and test it accordingly.

Risk assessment for our product safety is an essential aspect for the development process. We ensure that every product is intrinsically safe and we also take into account how the products will actually be used.

We collect feedback from customers from all over the world to find out how they use our products and how they find them. All this information is taken into account to improve our range of products over time.

How do we know that a product is safe?

We consider various aspects when it comes to safety, quality and environmental impact: chemical substances, fire resistance, surfaces, corrosion, lighting and electronics, function and durability, as well as washing.



Tendaggi Paradiso S.r.l.

Via Risorgimento, 613
22070 Cassina Rizzardi (Co) - Italy
T. +39 031 881 267 - F. +39 031 921 211
VAT No and Tax Code 00694080136

nofire@tendaggi-paradiso.com
www.tendaggi-paradiso.com